



Le 915_{a and b}

Shirt dress

MANUFACTURING PROCESS

/EN

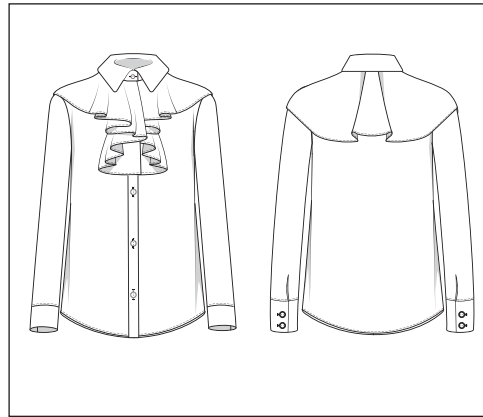
Difficulty: 3/3

Trims:

1. 12 buttons
2. fusible : collar, cuffs and buttoning tab
3. fabric yardage for 145 cm (72,5 cm on fold) = version a 3,30 m, version b = 2,00 m



a



b

This classic shirt dress of a sober and pared-down nature with its straight cut has been made fancier by adding frills at the neck. The frills can be constructed symmetrically or asymmetrically, depending on the style you want to create, and are pleated

and added in gradation, lending lightness and character to the model. You can choose not to add them and also play around with the length of the piece, opting to make simply the shirt top or the full dress.

1

PREPARATION TIPS

1- It is strongly recommended to steam iron fabrics before cutting your pattern pieces as certain fabrics shrink in size until ironed flat and in some cases even lengthen. You can also wash your fabric to make sure there is no colour spilling and other problems related to washing. If you decide to wash the fabric, make sure you iron. it afterwards before starting to cut.

2- All our sewing patterns have been made with seam allowances to facilitate your work and allow you to gain time when cutting. Unless otherwise specified, our seam allowance values are of 1cm. When this is not the case, notches are placed indicating the value to apply, for example 4cm for a hem. The pattern comes folded in A4 format but you can iron. it in order to have the full pattern totally flat if you find it helps the cutting process.

3- Our patterns go from size 8 to size 20 and each size is represented by different markings on the pattern. Use our measurement chart included with the pattern to define your size and be precise when taking your measurements to obtain the right size. If your measurements show a difference in size between your top and bottom half, opt for the larger of the two as it is always easier to reduce volume rather than increase it. If, for example, you are a size 10 bust and a size 12 hips, choose size 12 for the pattern and then make some alterations on bust level. Once you have established your size, follow the outline corresponding to it carefully when cutting out your pattern pieces . Remember that each size is represented by a different marking.

4- Some advice for cutting will now follow. Refer also to the pattern layout included that will help you optimize your fabric yardage.

There are several possibilities for cutting your pattern :

If you want to keep your pattern intact, you can outline each pattern piece on the fabric using a tracing wheel and carbon paper. Be careful in your choice of colour for the carbon paper as some fabrics keep the mark of the paper and it is difficult to remove. Be careful also to use a carbon colour that is visible on your fabric.

Cut out each pattern piece, place and pin each one carefully on your fabric and then using your scissors begin to follow all the shapes and markings of the pattern.

Place your pattern directly on the fabric and hold it down by placing weights on each corner. Use a circular cutter to cut the pattern and fabric directly. Be careful of the curved edges which will prove more difficult to cut.

Do not forget to indicate the notches, which will help you keep the cutting process straight and hence facilitate assembly.

5- For qualitative work, follow our assembly suggestions carefully, ironing your work regularly (to open the seams out etc). Ironing at each step of the process will lead to a neater, precise finish and make the final ironing of the finished garment much simpler.

2

PATTERN LAYOUT AND ASSEMBLY INSTRUCTIONS

A pattern layout has been presented below, showing you how to place the various pattern pieces on the fabric. This layout differs according to the size chosen.

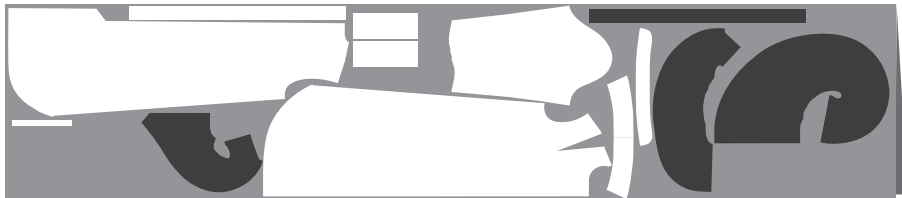
For sizes 10, use the yardage indicated on diagram n°1.

Make sure you respect the SG (straight grain) of the fabric, that is to say its vertical grain running parallel to the selvedge, to enhance the hang and straightness of your garment. The pieces or parts outlined in grey require fusible interfacing.

DIAGRAM N°1

FABRIC (SIZE M)

* IN BLACK, TO CUT ONLY 1 TIME



VERSION a: Width 145 cm (72,5 cm on fold) = 3,30 m

DIAGRAM N°2

FABRIC (SIZE M)



VERSION b: Width 145 cm (72,5 cm on fold) = 2,00 m

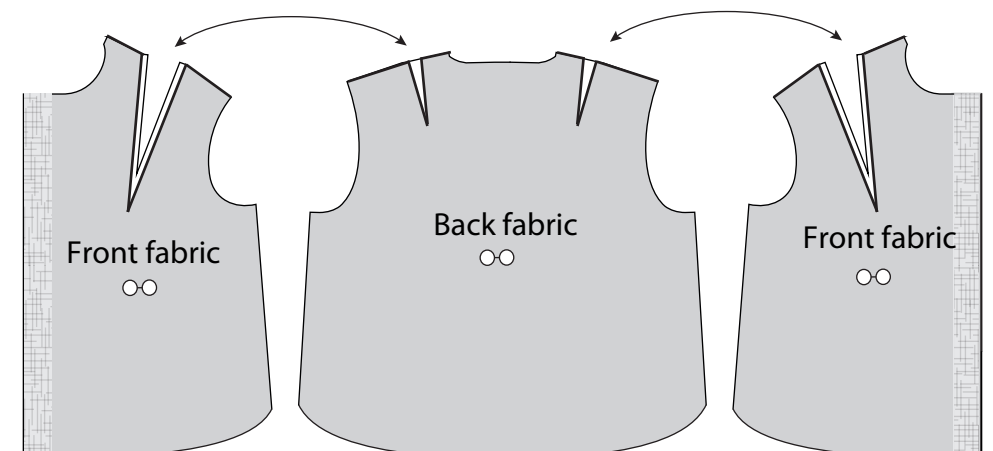
Seam allowances are included in this pattern. The value of these allowances is of 1cm, except where otherwise specified.

LEGENDE

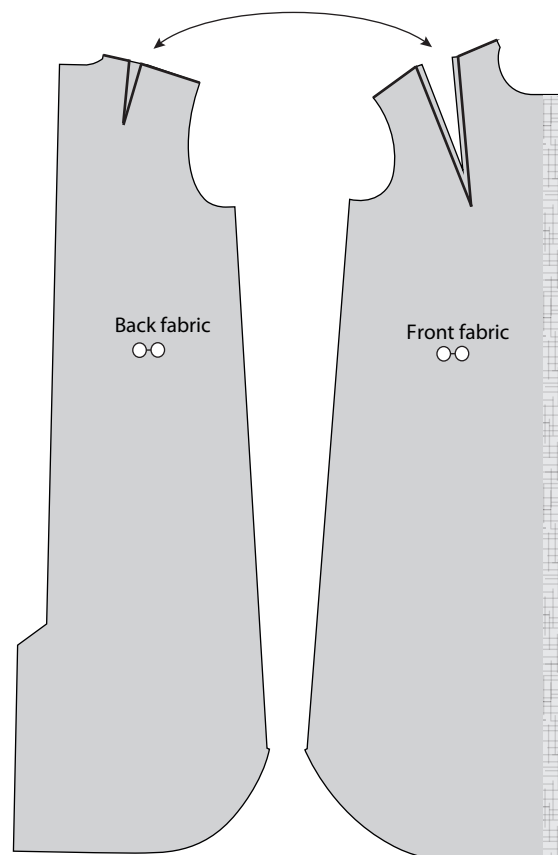


3

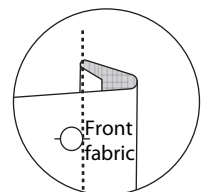
Diagram 1



SHIRT VERSION



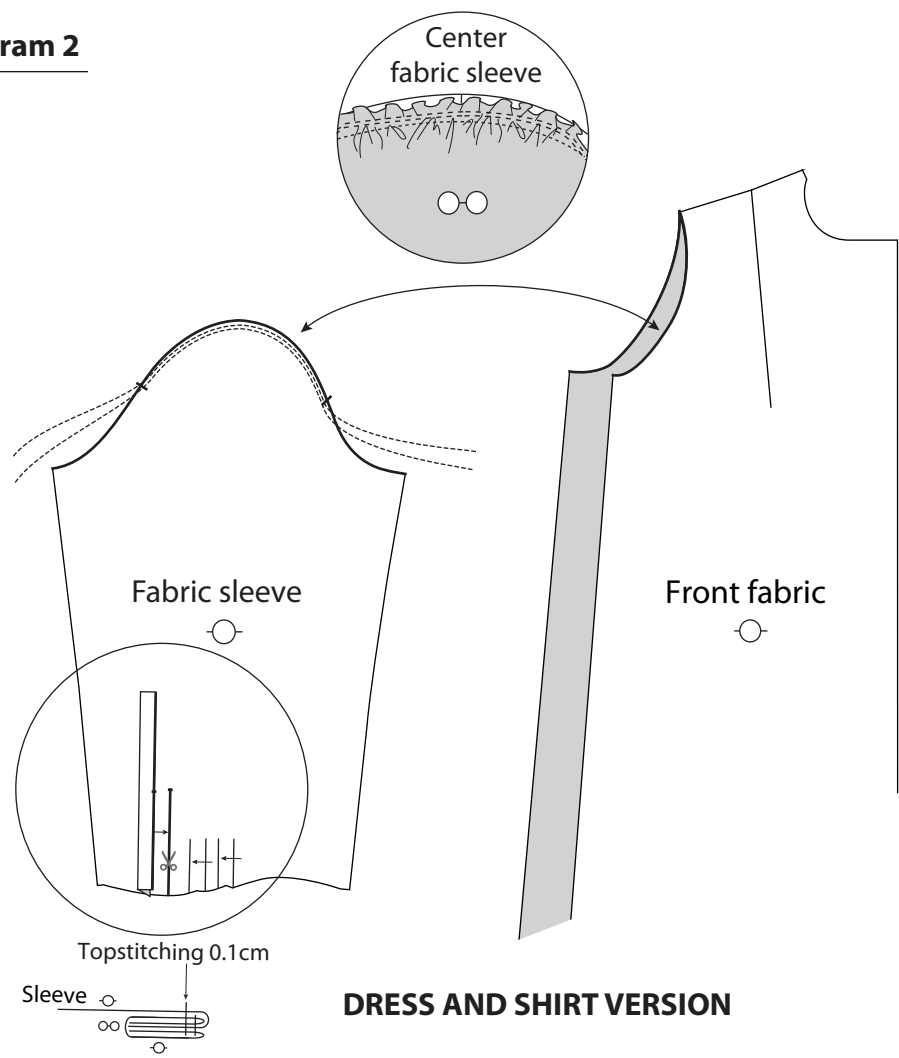
DRESS VERSION



Shirt and dress version : close the front and back shoulder darts, over-sewing the front darts. Thermo-fuse the buttoning tab sections. Take 1cm of the right front and fold it onto the wrong side (pressing the piece to help you). Stitch along the edge of the under tab. Create the buttonholes, working on the flat, and following the pattern for the precise position.

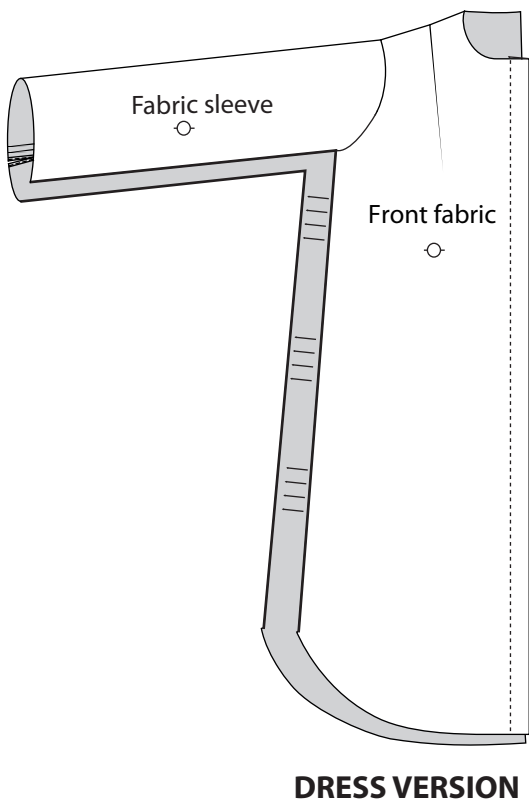
4

Diagram 2



DRESS AND SHIRT VERSION

Shirt and dress version : prepare the untearable vent. Iron a piece of bias binding and stitch it 0.5cm in from the edge of the vent right side facing. Find the center of the bias binding and turn 0.5cm of it onto wrong side facing, with the other half still right side facing and then stitch inside the seam, underneath the bias binding. Now prepare the pleats for the sleeve ends, making a stitch 0.5cm inside the seam allowance for a better hold. Prepare the sleeve cap by adding two gathered stitches, one 0.5cm in from the edge and the other 0.7cm in from the edge, between the two notches. Assemble the armscye (sleeve) and armhole (garment) in an overcast finish.

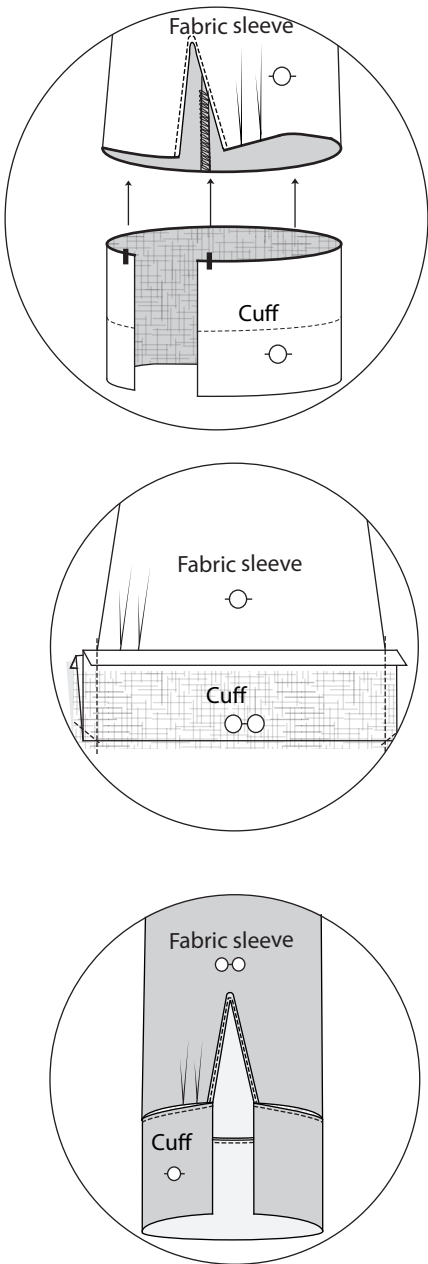


DRESS VERSION

Shirt and dress version : Sew the under sleeves and garment sides in a single seam on both sides and use an overcast finish

(or a French seam: stitch wrong sides together 0.4cm in from the seam allowance edge, flip over and then stitch right sides together 0.6cm in from this seam).

Diagram 3

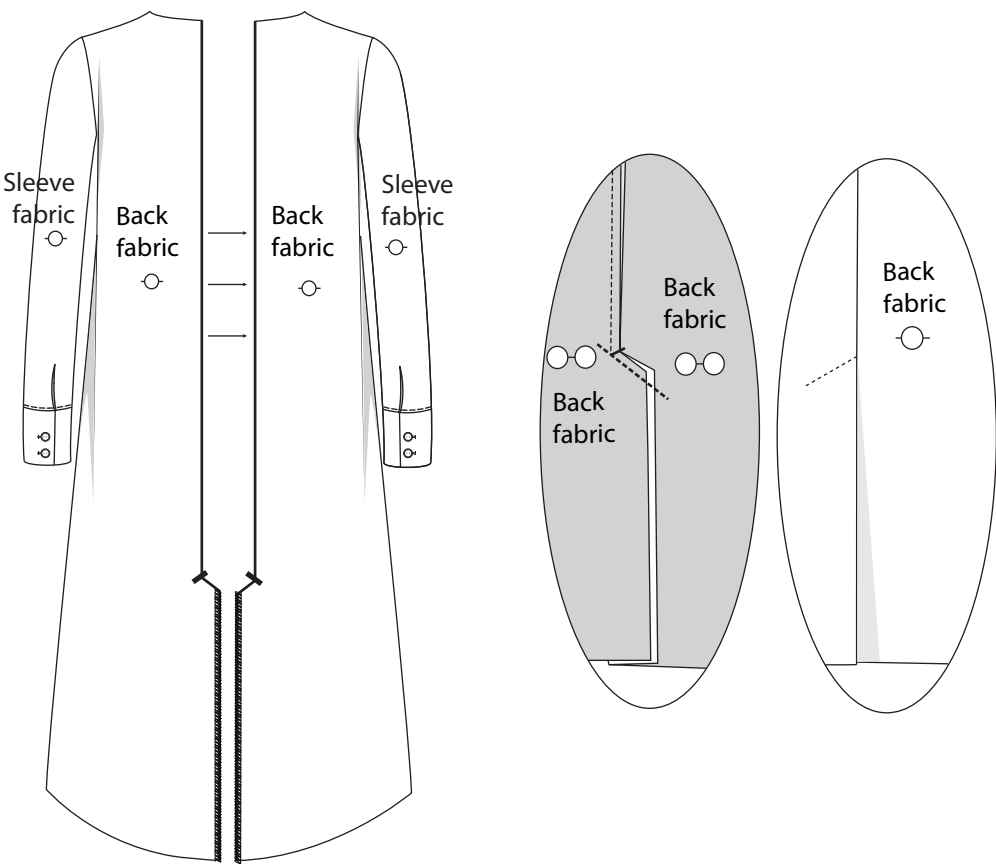


DRESS AND SHIRT VERSION

Shirt and dress version : thermo-fuse the cuffs, sew the under cuffs to the sleeve ends, ironing the seam allowances towards the inside of the cuffs. Fold the cuffs in half (right sides together), press the upper cuff seam allowances (wrong sides together) before sewing the sides. Clip the lower angles of the cuffs and then flip the cuffs over (wrong sides together). Press the fold-line at the bottom of the cuffs and then stitch inside the upper cuff seam to close them below. Make the buttonholes and place the buttons, following the pattern instructions.

Diagram 4

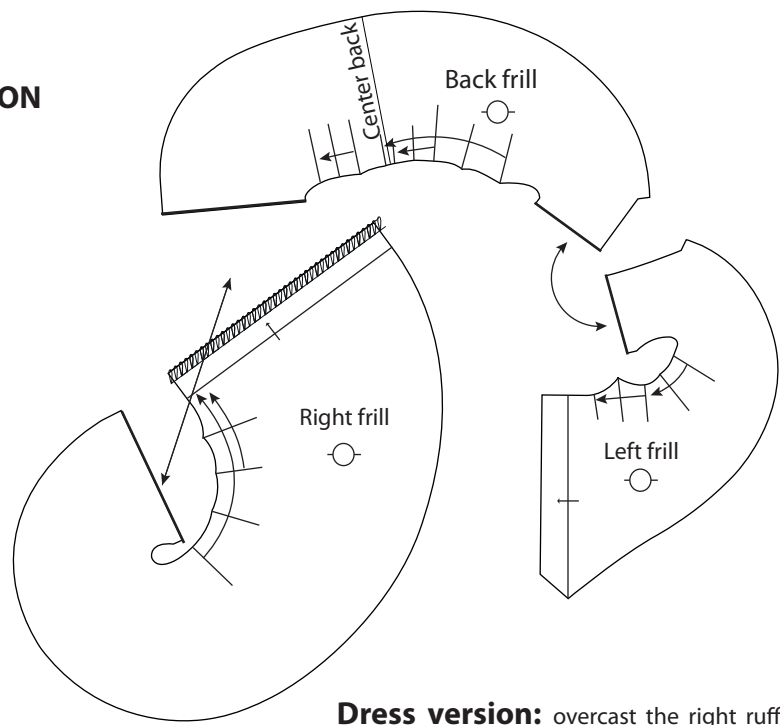
DRESS VERSION



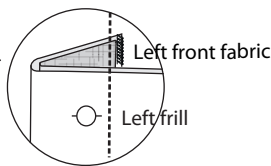
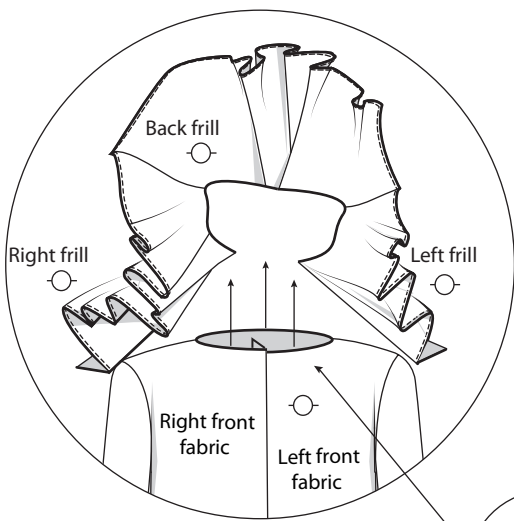
Dress version: overcast the edges of the vent, fold them and then topstitch. Sew center back up to the vent opening (at the bottom of the dress) with an overcast finish and then clip at the top of the vent. Fold the left side of the vent and topstitch at the top of the vent to hold the left and right back pieces together.

Diagram 5

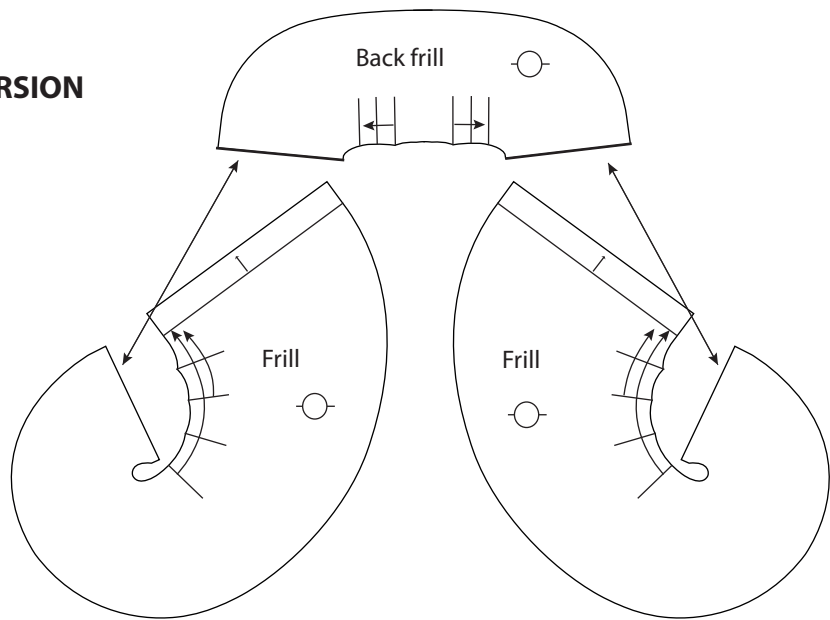
DRESS VERSION



Dress version: overcast the right ruffle on the side front panel and use the iron to make a fold-line. Assemble the three pieces of the ruffle (the two fronts and back), form the pleats and stitch 0.5cm in from the seam allowance edges to hold them in place 0.5cm. Make a topstitched double tuck all around the edge of the ruffle before positioning the left side front panel on the left front. Overcast together these two pieces and continue in overcast stitch to the bottom of the left front. Press the left buttoning tab. Stitch 0.5cm in from the edge to hold the neckline ruffle to the body.



SHIRT VERSION



Shirt version: proceed in the same way as for the dress version but follow only the steps for the right ruffle and right back as the ruffles are symmetrical.

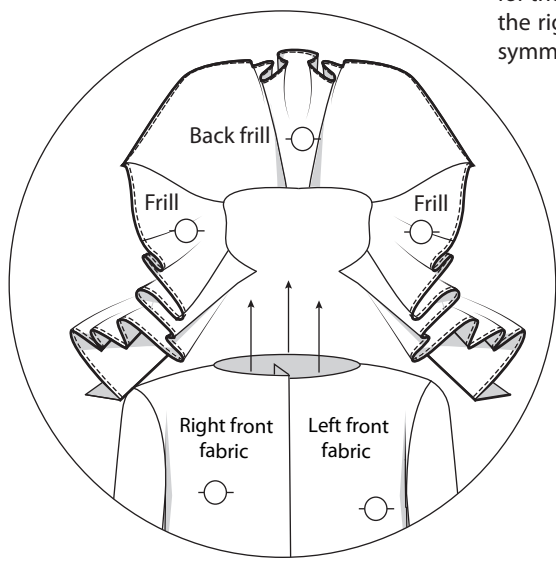
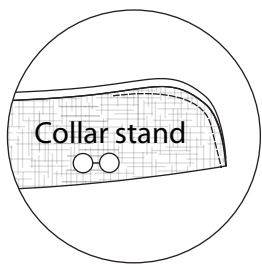
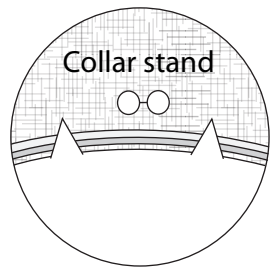
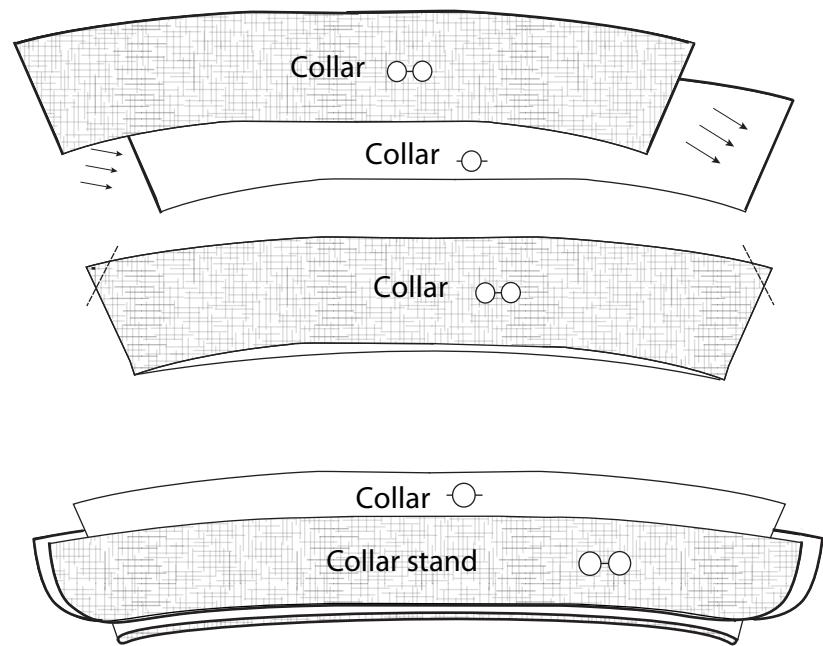


Diagram 6

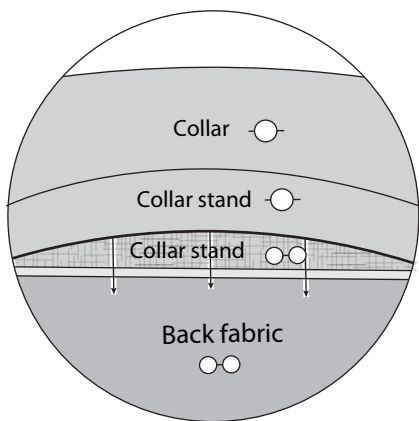
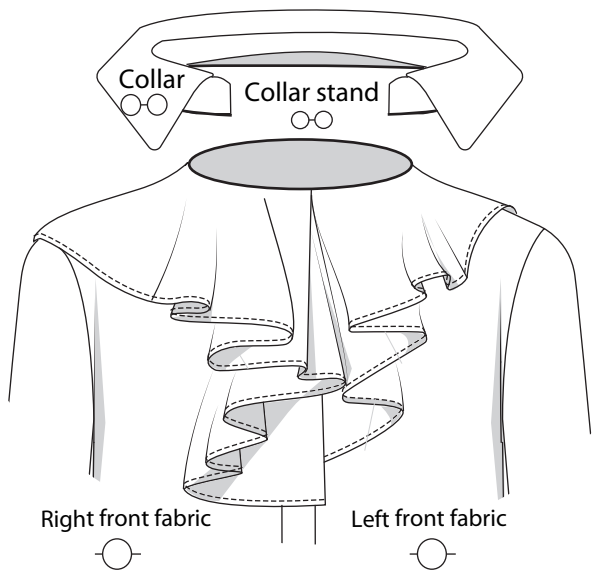
DRESS AND SHIRT VERSION



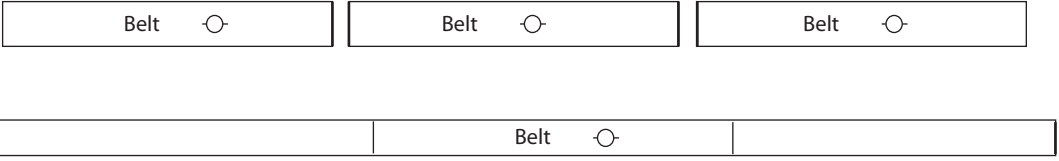
Dress and shirt version : thermo-fuse the upper and under collars, and also the upper and under collar stands. Assemble the two collar pieces together (right sides together) at the sides and collar edge in a single seam. Clip the collar angles, flip the piece over (wrong sides together) and iron. Place the collar stand pieces (right sides together) on either side of the collar and sew them together. Clip and trim the collar stand to 0.5cm before turning over to iron.

Diagram 7

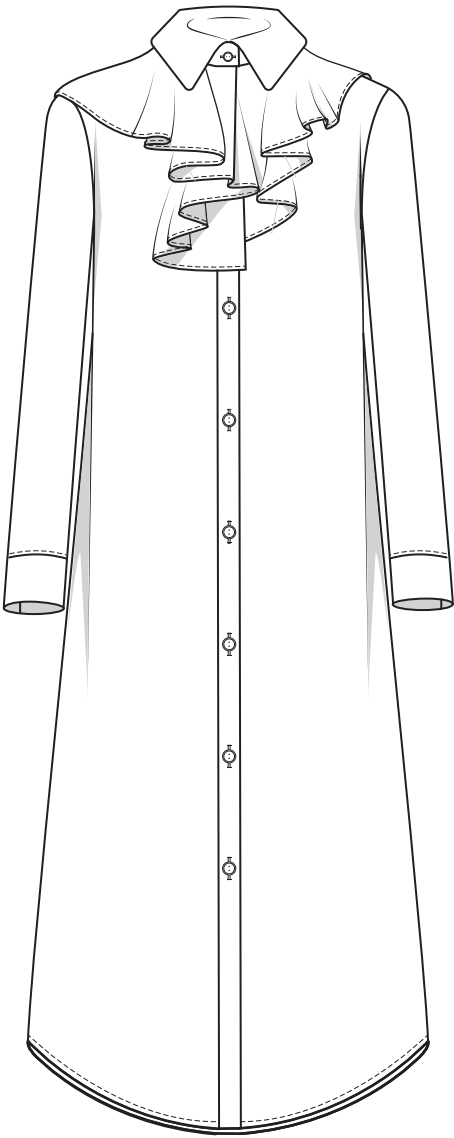
DRESS AND SHIRT VERSION



Dress and shirt version : neckline assembly. Assemble the body and ruffle with the under collar stand, folding the seams upwards, in the collar stand. With an iron, flatten the seam allowances of the upper collar stand (0.8cm upwards). Close the collar stand inside by hand sewing or stitch inside the neckline seam on under collar stand level to close the upper collar stand.

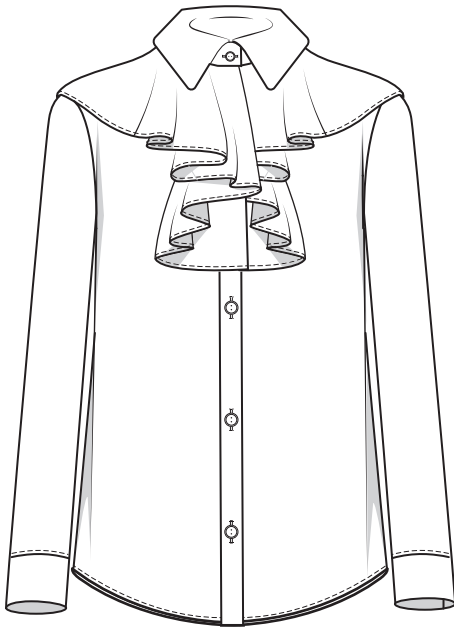


Dress version: waistband assembly.
Assemble the three waistband pieces, with an open seam finish, to form a single band. Fold the waistband in half (right sides together) and stitch along the entire length 1cm in from the edge before flipping the band over (wrong sides together) to iron. Fold in 0.5cm at the tips before closing them by hand sewing (or by machine stitch along the edge).



DRESS VERSION

Dress version: Make a double tuck of 0.5cm stitched at the bottom of the dress (hem) and also the buttonhole of the right side of the collar. Put buttons on the left front, as well as the collar button, following the template provided in the pattern.



SHIRT VERSION

Shirt version: Make a double tuck of 0.5cm stitched at the bottom of the dress (hem) and also the buttonhole of the right side of the collar. Put buttons on the left front, as well as the collar button, following the template provided in the pattern.